

CENTRAL PLANT MECHANICAL PHASING

GENERAL- COORDINATE SHUT-DOWN SCHEDULE OF ALL UTILITIES WITH HOSPITAL PERSONNEL MINIMUM 1 WEEK PRIOR TO INTERRUPTION OF SERVICE. SHUT-DOWNS SHALL OCCUR AT NIGHT DURING OFF-PEAK USE AND THE DURATION SHALL BE MINIMIZED AT ALL TIMES.

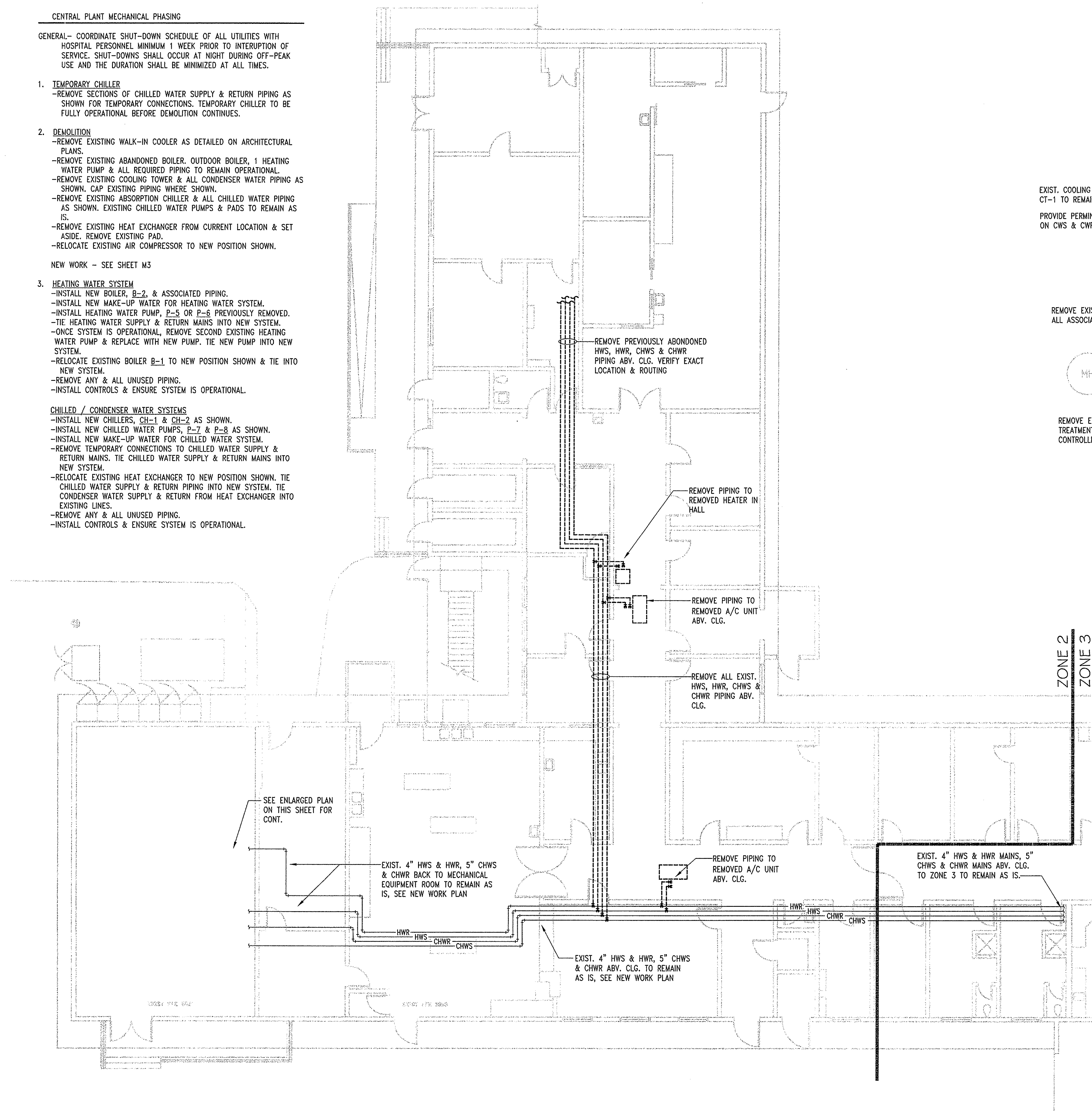
- TEMPORARY CHILLER**
-REMOVE SECTIONS OF CHILLED WATER SUPPLY & RETURN PIPING AS SHOWN FOR TEMPORARY CONNECTIONS. TEMPORARY CHILLER TO BE FULLY OPERATIONAL BEFORE DEMOLITION CONTINUES.
- DEMOLITION**
-REMOVE EXISTING WALK-IN COOLER AS DETAILED ON ARCHITECTURAL PLANS.
-REMOVE EXISTING ABANDONED BOILER, OUTDOOR BOILER, 1 HEATING WATER PUMP & ALL REQUIRED PIPING TO REMAIN OPERATIONAL.
-REMOVE EXISTING COOLING TOWER & ALL CONDENSER WATER PIPING AS SHOWN. CAP EXISTING PIPING WHERE SHOWN.
-REMOVE EXISTING ABSORPTION CHILLER & ALL CHILLED WATER PIPING AS SHOWN. EXISTING CHILLED WATER PUMPS & PADS TO REMAIN AS IS.
-REMOVE EXISTING HEAT EXCHANGER FROM CURRENT LOCATION & SET ASIDE. REMOVE EXISTING PAD.
-RELOCATE EXISTING AIR COMPRESSOR TO NEW POSITION SHOWN.

NEW WORK - SEE SHEET M3

- HEATING WATER SYSTEM**
-INSTALL NEW BOILER, B-2, & ASSOCIATED PIPING.
-INSTALL NEW MAKE-UP WATER FOR HEATING WATER SYSTEM.
-INSTALL HEATING WATER PUMP, P-5 OR P-6 PREVIOUSLY REMOVED.
-TIE HEATING WATER SUPPLY & RETURN MAINS INTO NEW SYSTEM.
-ONCE SYSTEM IS OPERATIONAL, REMOVE SECOND EXISTING HEATING WATER PUMP & REPLACE WITH NEW PUMP. TIE NEW PUMP INTO NEW SYSTEM.
-RELOCATE EXISTING BOILER B-1 TO NEW POSITION SHOWN & TIE INTO NEW SYSTEM.
-REMOVE ANY & ALL UNUSED PIPING.
-INSTALL CONTROLS & ENSURE SYSTEM IS OPERATIONAL.

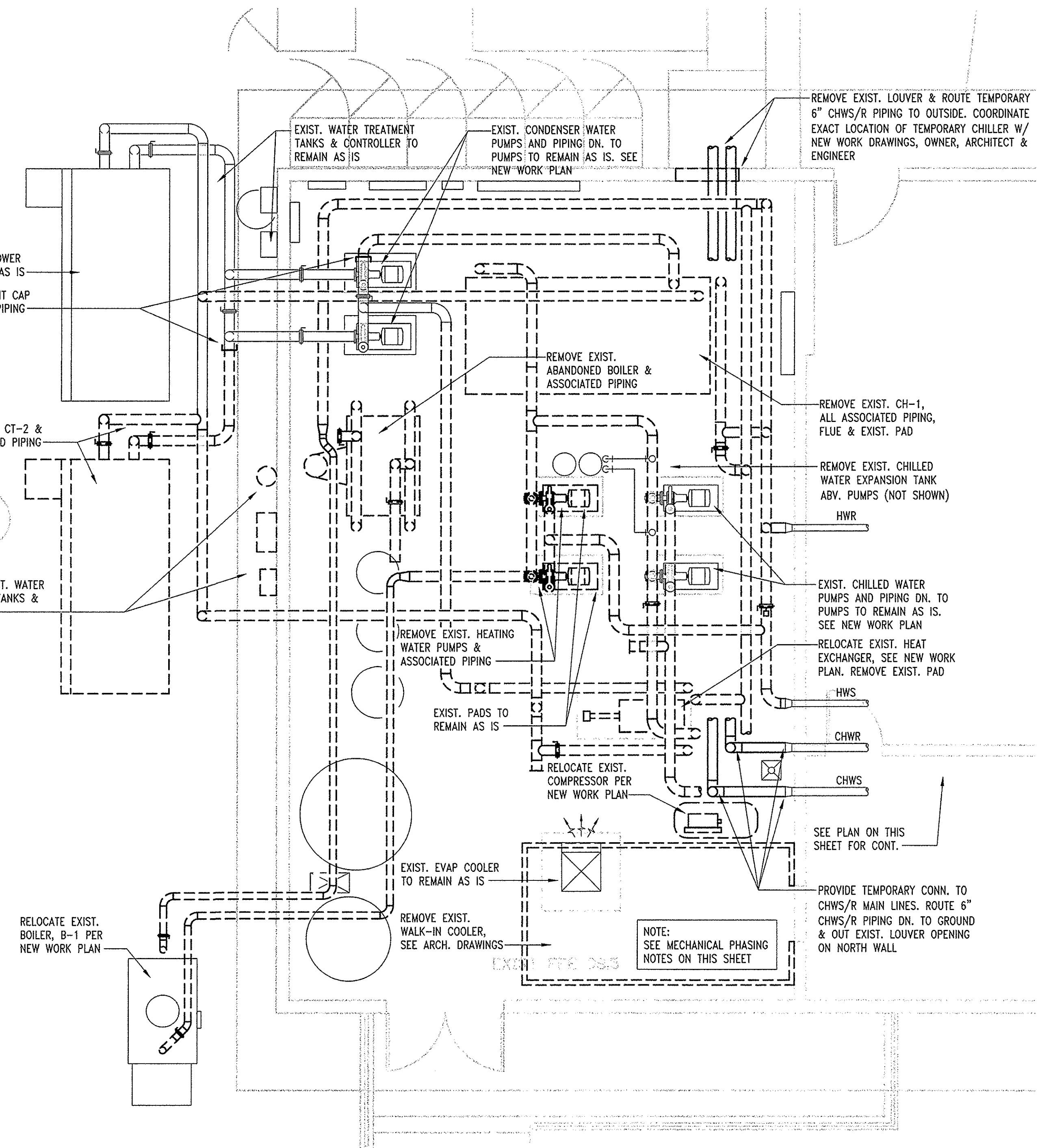
CHILLED / CONDENSER WATER SYSTEMS

- INSTALL NEW CHILLERS, CH-1 & CH-2 AS SHOWN.
- INSTALL NEW CHILLED WATER PUMPS, P-7 & P-8 AS SHOWN.
- INSTALL NEW MAKE-UP WATER FOR CHILLED WATER SYSTEM.
- REMOVE TEMPORARY CONNECTIONS TO CHILLED WATER SUPPLY & RETURN MAINS. TIE CHILLED WATER SUPPLY & RETURN MAINS INTO NEW SYSTEM.
- RELOCATE EXISTING HEAT EXCHANGER TO NEW POSITION SHOWN. TIE CHILLED WATER SUPPLY & RETURN PIPING INTO NEW SYSTEM. TIE CONDENSER WATER SUPPLY & RETURN FROM HEAT EXCHANGER INTO EXISTING LINES.
- REMOVE ANY & ALL UNUSED PIPING.
- INSTALL CONTROLS & ENSURE SYSTEM IS OPERATIONAL.



ZONE 2 MECHANICAL PIPING DEMOLITION PLAN

SCALE: 1/8" = 1'-0"



MECHANICAL EQUIPMENT ROOM DEMOLITION PLAN

SCALE: 1/4" = 1'-0"



SMU Mechanical Engineering, LLC
5447 East Fifth Street # 112
Tucson, Arizona 85711
6201327-7611
6201327-0432
#14506

REV	DATE	DESCRIPTION	BY
APPROVED		STRUCTURAL ARCHITECTURAL MECHANICAL ELECTRICAL	
DEPARTMENT OF HEALTH AND HUMAN SERVICES INDIAN HEALTH SERVICE ENGINEERING SERVICES DALLAS			
DALLAS		TEXAS	
SELLS HOSPITAL HVAC PHASE III SELLS, ARIZONA			
DRAWN	RCK	CHECKED	KMC
SCALE	AS NOTED	DATE	13 JUNE 2008
MECHANICAL PIPING DEMOLITION PLAN		PROJECT NUMBER	DRAWING NUMBER
TU3SE051H8		MD3	