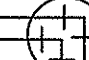
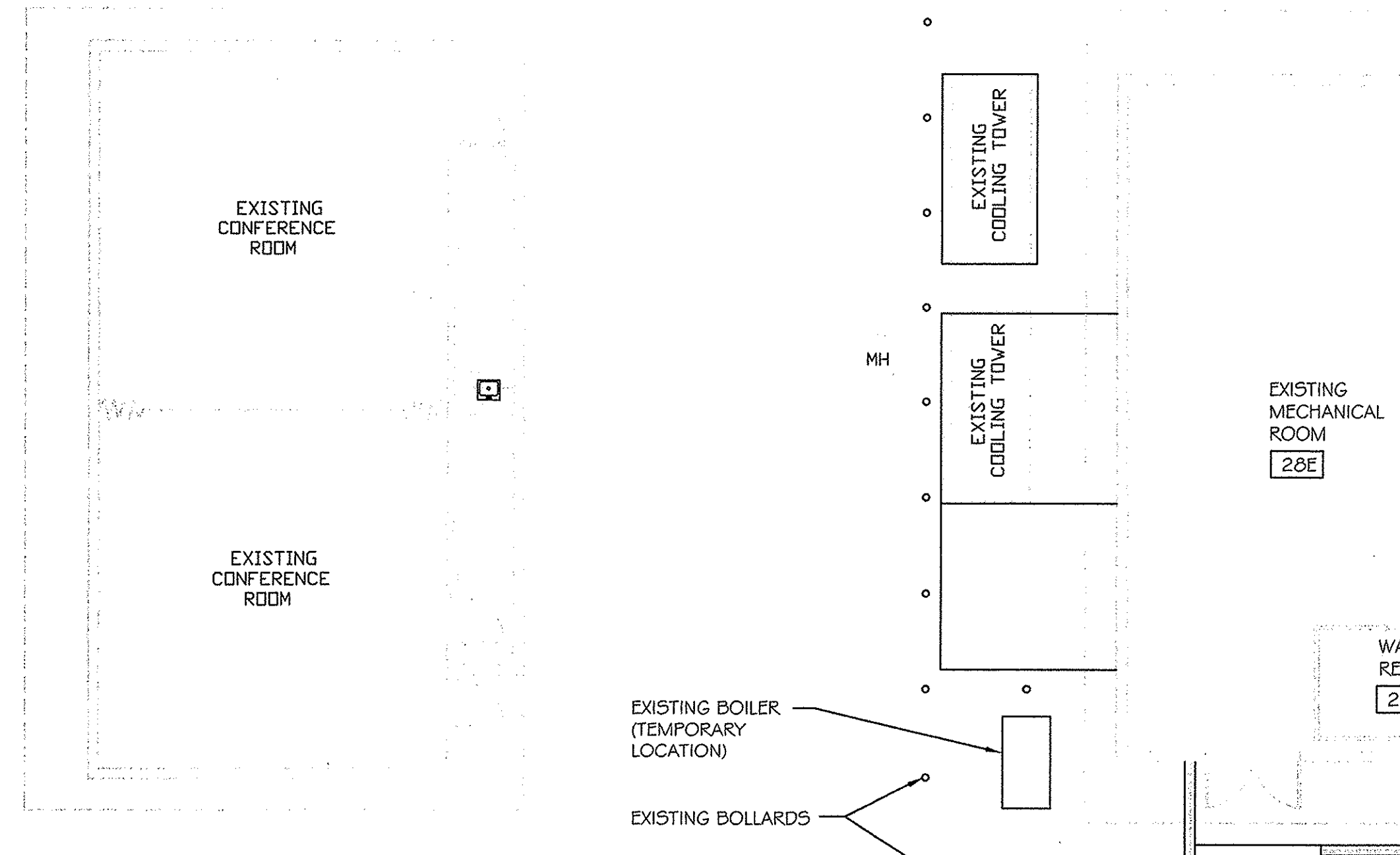
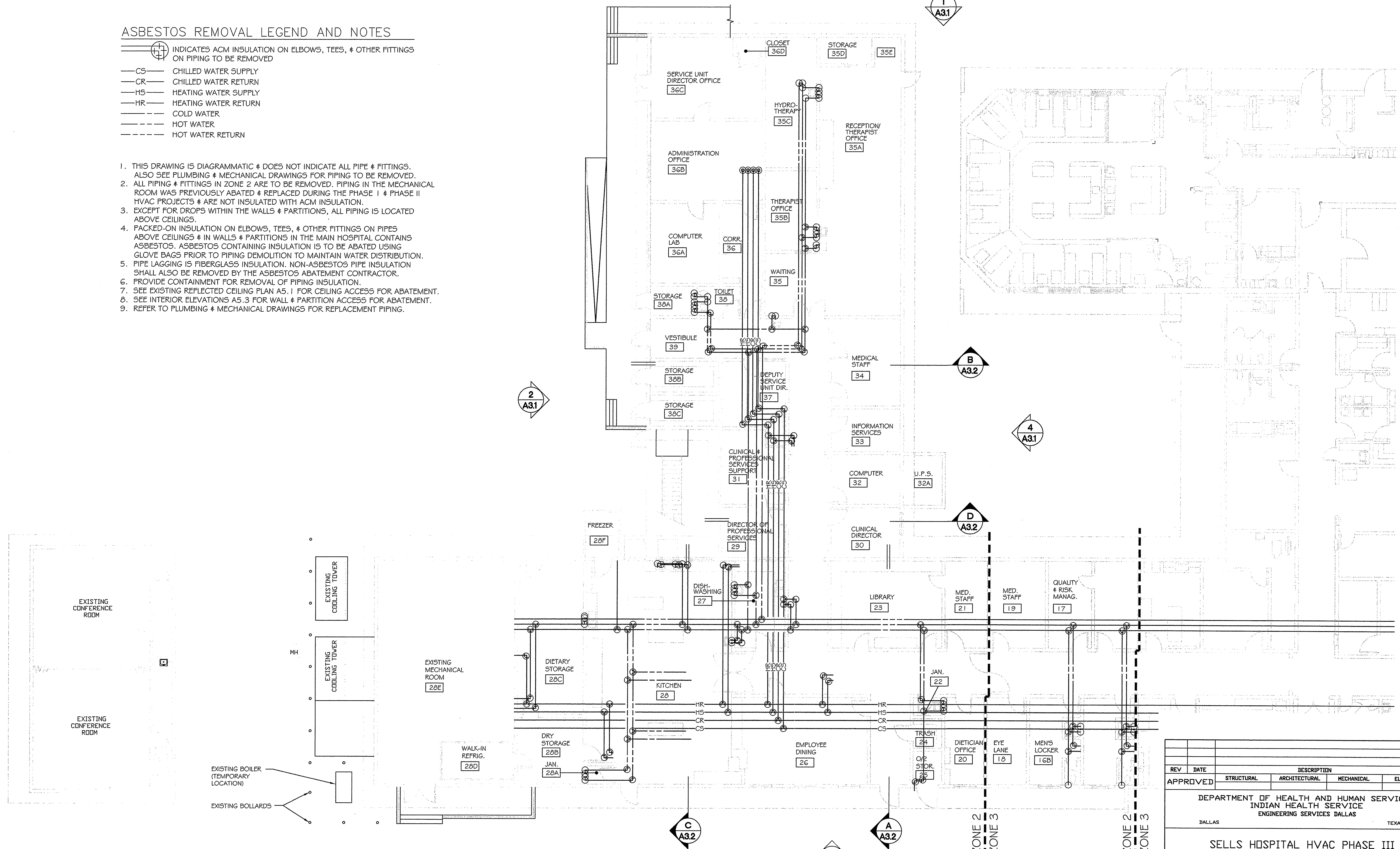


ASBESTOS REMOVAL LEGEND AND NOTES

-  INDICATES ACM INSULATION ON ELBOWS, TEES, & OTHER FITTINGS ON PIPING TO BE REMOVED
- CS— CHILLED WATER SUPPLY
- CR— CHILLED WATER RETURN
- HS— HEATING WATER SUPPLY
- HR— HEATING WATER RETURN
- C— COLD WATER
- H— HOT WATER
- HR— HOT WATER RETURN

1. THIS DRAWING IS DIAGRAMMATIC & DOES NOT INDICATE ALL PIPE & FITTINGS. ALSO SEE PLUMBING & MECHANICAL DRAWINGS FOR PIPING TO BE REMOVED.
2. ALL PIPING & FITTINGS IN ZONE 2 ARE TO BE REMOVED. PIPING IN THE MECHANICAL ROOM WAS PREVIOUSLY ABATED & REPLACED DURING THE PHASE I & PHASE II HVAC PROJECTS & ARE NOT INSULATED WITH ACM INSULATION.
3. EXCEPT FOR DROPS WITHIN THE WALLS & PARTITIONS, ALL PIPING IS LOCATED ABOVE CEILINGS.
4. PACKED-ON INSULATION ON ELBOWS, TEES, & OTHER FITTINGS ON PIPES ABOVE CEILINGS & IN WALLS & PARTITIONS IN THE MAIN HOSPITAL CONTAINS ASBESTOS. ASBESTOS CONTAINING INSULATION IS TO BE ABATED USING GLOVE BAGS PRIOR TO PIPING DEMOLITION TO MAINTAIN WATER DISTRIBUTION.
5. PIPE LAGGING IS FIBERGLASS INSULATION. NON-ASBESTOS PIPE INSULATION SHALL ALSO BE REMOVED BY THE ASBESTOS ABATEMENT CONTRACTOR.
6. PROVIDE CONTAINMENT FOR REMOVAL OF PIPING INSULATION.
7. SEE EXISTING REFLECTED CEILING PLAN A5.1 FOR CEILING ACCESS FOR ABATEMENT.
8. SEE INTERIOR ELEVATIONS A5.3 FOR WALL & PARTITION ACCESS FOR ABATEMENT.
9. REFER TO PLUMBING & MECHANICAL DRAWINGS FOR REPLACEMENT PIPING.



ASBESTOS ABATEMENT PLAN

SCALE: 1/8" = 1'-0"



REV	DATE	DESCRIPTION	BY
APPROVED		STRUCTURAL ARCHITECTURAL MECHANICAL ELECTRICAL	
DEPARTMENT OF HEALTH AND HUMAN SERVICES INDIAN HEALTH SERVICE ENGINEERING SERVICES DALLAS DALLAS TEXAS			
SELLS HOSPITAL HVAC PHASE III SELLS, ARIZONA			
DRAWN	CBL	CHECKED	MF
SCALE	AS NOTED	DATE	30 JUNE 2008
ASBESTOS ABATEMENT PLAN PROJECT NUMBER TU3SE051H8 SHEET		DRAWING NUMBER AR1.1	